

MAIN PAGE :

Mohan Spintex Web page

Home	About Us	Products	Plants	Projects	Overseas/ Subsidiaries	Investor Relations	CSR	Contact Us
1	2	3	4	5	6	7	8	9

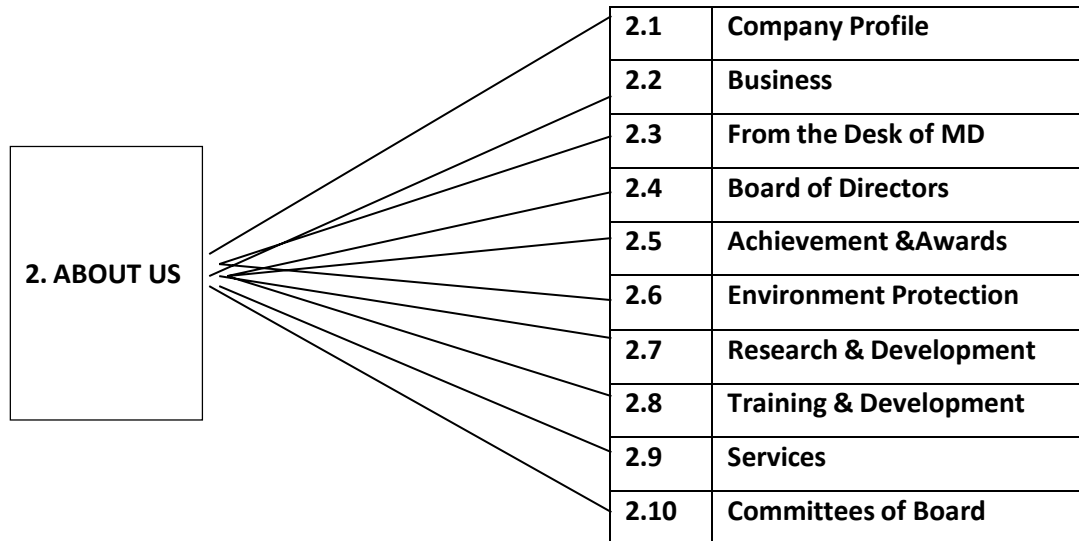
INSERT PHOTO

What's New-Announcements

1. HOME :

# Welcome to Mohan Spintex India Limited @ LOGO

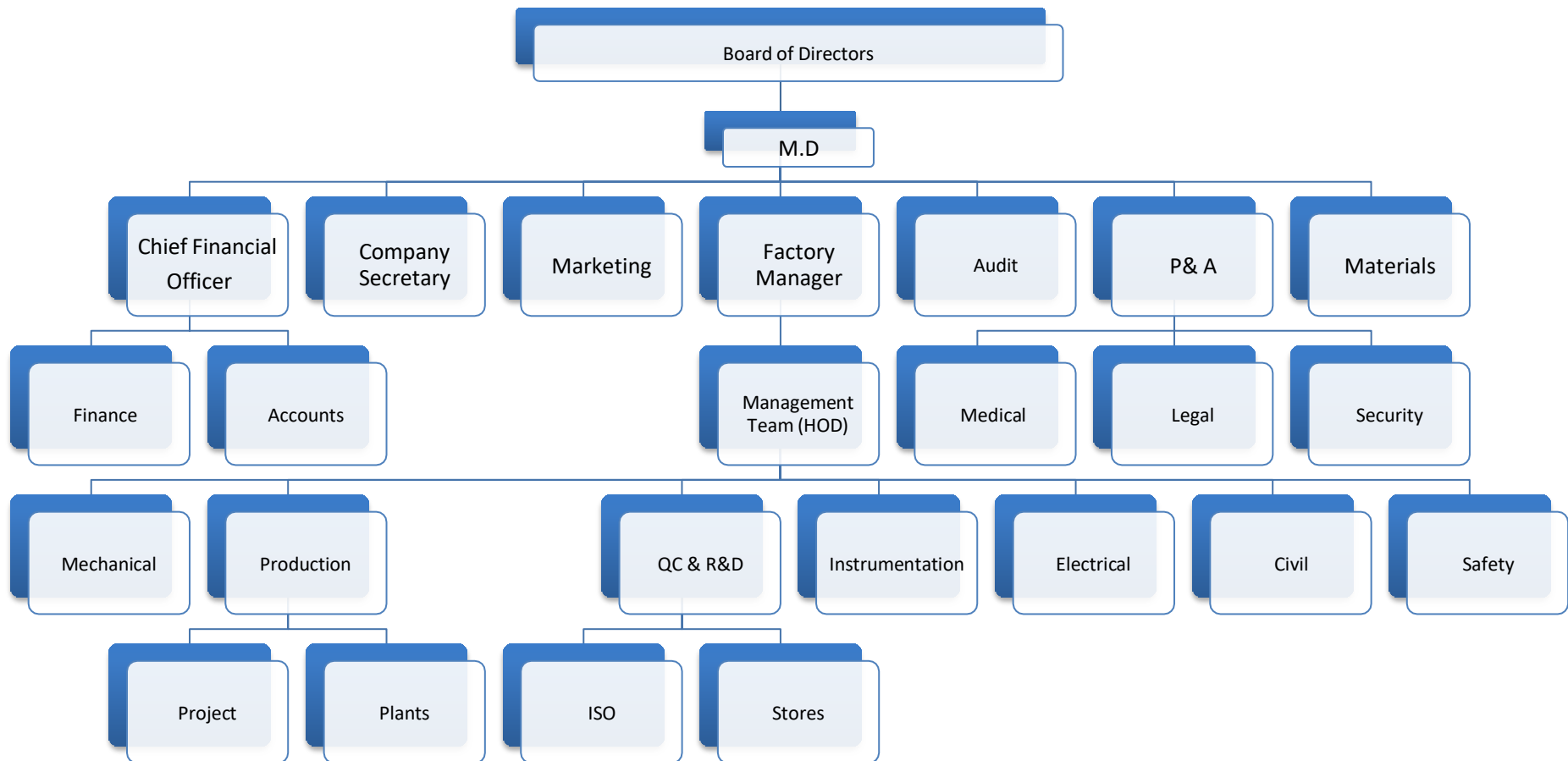
- Mohan Spintex India Limited (MSIL) was incorporated in 2005 and is based out of Vijayawada, Andhrapradesh
- MSIL commenced its operations in 2006 with 14,400 spindles. Today, it has become a global player with 1,21,488 spindles 4,800 TFO Drums, 6,272 Rotors and 324 AirjetLooms with state-of-the-art manufacturing facilities located near Vijayawada, AP within a span of Fifteen Years.
- MSIL's product portfolio includes a variety of yarn such as 100% Compact, Combed, Open End and Ply yarn. It also produces Fabric & Bed linens.
- MSIL Indian clientele includes leading fabric & garment manufacturers in such as Welspun, Himatsangika, Indo count, Mafatlal etc. while it also exports to leading fabric and garment manufacturers globally
- MSIL focuses to process One Lakh meters per day and 15000 sheets per shift in CMT division.
- MSIL produces over 2,500 tons of quality yarn and 15,00,000 meters of cloth per month and is the second largest textile manufacturing company in AP.



## **2.1 Company Profile**

Mohan Spintex is traditionally into export of Home textiles across the globe. The group was founded in the year 2005 with just 14400 Spindles and has grown exponentially in short span of time, with complete Integration of Spinning, Weaving, Processing and Sewing.

The Strength of MSIL lies in its knowledge base acquired over the years. Our continuous R&D, and interactions with our customers is the driving force behind our achievements, marketing and supporting systems. The highly motivated work force of MSIL is forging ahead with a single minded purpose.



## **2.2 Business**

Mohan Spintex is expanding its business rapidly, it has four production units at Vattigudipadu, mallvalli and Remalle

In order to facilitate export business Mohan spintex India Limited incorporated its wholly owned subsidiary at U.S.A

Mohan Spintex India Limited has 4 Wholly owned subsidiaries :

1. MOHAN MERCANTILE INDIA PRIVATE LIMITED
2. MOHAN DWELLINGS PRIVATE LIMITED
3. MOHAN RENEWABLE ENERGY INDIA PRIVATE LIMITED
4. MOHAN INTERNATIONAL INC.

Mohan Spintex is thriving its success through customer satisfaction.

## **2.3 From the Desk of MD**

We, at Mohan, believe that Commitment on Quality, Service and timely delivery have been instrumental elements for our Success and Growth.

We are equipped with World class Manufacturing Facilities, Highly Qualified Leadership team and A Committed workforce who are capable to adopt themselves with the evolving technologies in the Industry.

As a team with distinguished Board of Directors with rich and diverse experiences, we are capable of steering the Group to Greater Heights

#### 2.4 Board of Directors

S.no	Name of the Director	Designation
1	MOHAN RAO VALLABHANENI	Chairman
2	SUDHAKAR CHOWDARY VALLABHANENI	Managing Director
3	PADMINI VALLABHANENI	Whole Time Director
4	RAVI KUMAR GOTTIMUKKALA	Whole Time Director
5	RAMAPRASAD CHALASANI	Independent Director
6	SUBRAMANYAM MUTHULUR	Independent Director
7	MOHANA KUMARI RAVELLA	Non Executive Director
8	SUBBA RAO YANTRAPRAGADA	Non Executive Director
9	SANKAR RAO KONERU	Non Executive Director
10	VENKATANJAN KAKARALA	Non Executive Director

#### 2.5 Achievements & Awards

#### 2.6 Environment Protection

#### 2.7 Research & Development

## **2.8 Training & development**

## **2.9 Services**

Our Services Include :

- Technical guidance in selection of processing equipment.
- Training in process of spinning, weaving, dyeing, printing and finishing for new entrepreneurs.
- Testing of material processed by customers.

## **2.10 Committees of Board**

Details of the various committees of board of directors

### **1. AUDIT COMMITTEE**

1. Shri. Chalasani Ramaprasad – Independent Director
2. Shri. Muthulur Subrahmanyam – Independent Director
3. Shri. Vallabhaneni Mohan Rao – Non Executive Director

### **2. NOMINATION AND REMUNERATION COMMITTEE**

1. Shri. Chalasani Ramaprasad – Independent Director
2. Shri. Muthulur Subrahmanyam – Independent Director
3. Shri. Vallabhaneni Mohan Rao – Non Executive Director

### **3. CORPORATE SOCIAL RESPONSIBILITY AND SUSTAINABILITY DEVELOPMENT COMMITTEE (CSR&SD)**

1. Shri. Chalasani Ramaprasad – Independent Director
2. Shri. Muthulur Subrahmanyam – Independent Director
3. Shri. Vallabhaneni Sudhakar Chowdary – Managing Director

### **4. EXECUTIVE COMMITTEE**

1. Shri. Vallabhaneni Sudhakar Chowdary – Managing Director
2. Smt. Vallabhaneni Padmini – Whole Time Director
3. Shri. Gottimukkala Ravi Kumar – Whole Time Director

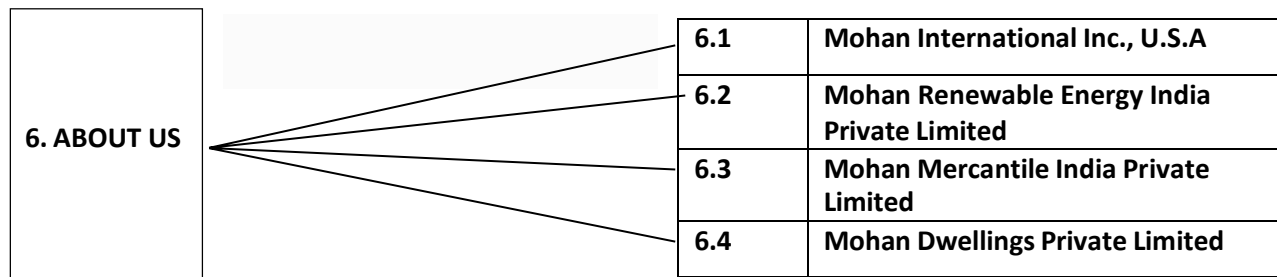
### 3. Products

### 4. Plants

- 4.1 Reamalle
- 4.2 Vattigudipadu
- 4.3 Mallavalli

### 5. Projects

### 6. Overseas/ Subsidiaries



#### 6.1 Mohan International Inc., U.S.A

**Mohan International Inc., U.S.A.** was incorporated on 01/01/2017 as a wholly owned subsidiary of Mohan Spintex India Limited with a view towards overseas expansion. The office is located at 140E, Commonwealth Ave., Suite201, Fullerton, CA 92832, U.S.A



## 6.2 Mohan Renewable Energy India Private Limited

**Mohan Renewable Energy India Private Limited** Was incorporated on 05<sup>th</sup> September 2014 in the city of Vijayawada at 48-12-17, Eluru Road, Gunadala, Vijayawada, the business of Mohan Renewable Energy India Private Limited is to produce, manufacture, distribute, purchase and sell power generated by means of renewable and non renewable source of energy.

## 6.3 MOHAN DWELLINGS PRIVATE LIMITED

**MOHAN DWELLINGS PRIVATE LIMITED** Was incorporated on 24<sup>th</sup> June 2014 in the city of Vijayawada at 48-12-17, Eluru Road, Gunadala, Vijayawada, the business of **MOHAN DWELLINGS PRIVATE LIMITED** is to enter into, manage, undertake, carry on and engage in the business of real estate Development.

## 6.4 MOHAN MERCANTILE INDIA PRIVATE LIMITED

**MOHAN MERCANTILE INDIA PRIVATE LIMITED** Was incorporated on 2<sup>nd</sup> September 2014 in the city of Vijayawada at 48-12-17, Eluru Road, Gunadala, Vijayawada, the business of MOHAN MERCANTILE INDIA PRIVATE LIMITED is to facilitate export of goods from india and imports into India.

## 7. INVESTOR RELATIONS

**7. INVESTOR RELATIONS**

7.1	Financial Performance	7.7	Corporate Announcements	Add	(Additions)if any
7.2	Policies	7.8	Annual Reports		
7.3	Shareholding Pattern	7.9	Cancellation/ Variation of Nomination		
7.4	Downloads	7.10	Updation of Shareholder Information		
7.5	Investor Services	7.11	IEPF Transfer		
7.6	Code of conduct	7.12	Corporate Governance		

## 7.1 FINANCIAL PERFORMANCE

### 2020-21

30-06-2020	30-09-2020	31-12-2020	
------------	------------	------------	--

### 2019-20

30-06-2019	30-09-2019	31-12-2019	31-03-2020
------------	------------	------------	------------

### 2018-19

30-06-2018	30-09-2018	31-12-2018	31-03-2019
------------	------------	------------	------------

### 2017-18

30-06-2017	30-09-2017	31-12-2017	31-03-2018
------------	------------	------------	------------

### 2016-17

30-06-2016	30-09-2016	31-12-2016	31-03-2017
------------	------------	------------	------------

## 7.2 Policies

7.2.1	Whistle Blower Policy_Vigil Mechanism
7.2.2	Risk Policy
7.2.3	Remuneration and Nomination Policy
7.2.4	Policy For Related Party Transaction

<b>7.2.5</b>	<b>Policy for Prevention Sexual Harssment of Women</b>
<b>7.2.6</b>	<b>Policy For Evaluation of the performance of The Board of Directors</b>
<b>7.2.7</b>	<b>Business Responsibilty policy</b>

### 7.3 Shareholding Pattern

**2021**

<b>31-3-2021</b>	<b>30-06-2021</b>	<b>30-09-2021</b>	<b>31-12-2021</b>
------------------	-------------------	-------------------	-------------------

**2020**

<b>31-3-2020</b>	<b>30-06-2020</b>	<b>30-09-2020</b>	<b>31-12-2020</b>
------------------	-------------------	-------------------	-------------------

**2019**

<b>31-3-2019</b>	<b>30-06-2019</b>	<b>30-09-2019</b>	<b>31-12-2019</b>
------------------	-------------------	-------------------	-------------------

**2018**

<b>31-03-2018</b>	<b>30-06-2018</b>	<b>30-08-2018</b>	<b>31-12-2018</b>
-------------------	-------------------	-------------------	-------------------

**2017**

<b>31-03-2017</b>	<b>30-06-2017</b>	<b>30-07-2017</b>	<b>31-12-2017</b>
-------------------	-------------------	-------------------	-------------------

## **7.4 DOWNLOADS**

7.4.1 10F

7.4.2 15G

7.4.3 15H

7.4.4 Self Declaration

## **7.5 INVESTOR SERVICES**

Mohan Spintex India Limited provides services to its shareholders through its Registrar and Transfer Agent, BIGSHARE SERVICES PRIVATE LIMITED, E-3 Ansa Industrial Estate, saki Vihar Road, Mumbai 400072.

**For grievances redressal, the shareholders may approach :**

## **7.6 CODE OF CONDUCT**

Code of Conduct for Board Members and Senior Management Personnel of the Company- Link File or scroll down page

## **7.7 CORPORATE ANNOUNCEMENT**

**Date      Event**

Like notices of BM,EGM, press releases, financials, asset purchase, voting results, scrutiniser report, any other material information

## **7.8 ANNUAL REPORTS**

<b>2019-20</b>	<b>2018-19</b>	<b>2017-18</b>
<b>2016-17</b>	<b>2015-16</b>	<b>2014-15</b>
<b>2013-14</b>	<b>2012-13</b>	<b>2011-12</b>

**7.9 CANCELLATION / VARIATION OF NOMINATION**

Nomination cancellation/variation form to be displayed in pdf format and on click be downloaded.

**7.10 UPDATION OF SHAREHOLDERS INFORMATION**

Updation of PAN and bank details of the shareholder form to be displayed in pdf format and on click be downloaded.

**7.11 IEPF TRANSFER**

**Procedure for claiming shares/dividends transferred to IEPF Account**

The members who have a claim on dividends and shares may claim the same from IEPF Authority by submitting an online application in web Form No. IEPF-5 available on the website [www.iepf.gov.in](http://www.iepf.gov.in) and sending a physical copy of the same, duly signed to the Company, along with requisite documents enumerated in the Form No. IEPF-5. No claims shall lie against the Company in respect of the dividends / shares so transferred.

**Details of Dividend Transferred to IEPF Account(- Link- Tab on click file Excel file to be downladed)**

**Details of Shares transferred to IEPF Account(- Tab on click file Excel file to be downladed)**

**Details of Dividends unpaid for 7 years and Shares to be transferred to IEPF Account(- Tab on click file Excel file to be downladed)**

**7.12 CORPORATE GOVERNANCE**

**2019-20**

<b>March 31, 2020</b>	<b>Dec 31, 2019</b>	<b>Sep 30, 2019</b>	<b>June 30, 2019</b>
-----------------------	---------------------	---------------------	----------------------

Corprate Governance Report be placed on click be downloaded in pdf format

## 8. CSR

### CSR policy of the company (ON CLICK)

Below information to be opened

#### **Mohan Spintex India Limited Corporate Social Responsibility**

We have adopted a Corporate Social Responsibility (“CSR”) policy in compliance with the requirements of the Companies Act, 2013 and the rules framed thereunder. Our CSR activities are primarily focused on initiatives related to education, rural development, providing old age home and these activities are centred around the geographical areas near our processing plants.

#### **Corporate Social Responsibility Committee**

The members of the Corporate Social Responsibility Committee are:

<b>Sri. Chalasani Ramaprasad</b>	<b>Chairman</b>
<b>Sri. Muthulur Subrahmanyam</b>	<b>Member</b>
<b>Sri. Vallabhaneni Sudhakar Chowdary</b>	<b>Member</b>

The terms of reference of the Corporate Social Responsibility Committee include the following:

- Formulating and recommending to the Board the corporate social responsibility policy of the Company, including any amendments thereto in accordance with Schedule VII of the Companies Act, 2013 and the rules made thereunder;
- Identifying corporate social responsibility policy partners and corporate social responsibility policy programmes;
- Recommending the amount of corporate social responsibility policy expenditure for the corporate social responsibility activities and the distribution of the same to various corporate social responsibility programmes undertaken by the Company;

- Identifying and appointing the corporate social responsibility team of the Company including corporate social responsibility manager, wherever required;
- Delegating responsibilities to the corporate social responsibility team and supervise proper execution of all delegated responsibilities;
- Reviewing and monitoring the implementation of corporate social responsibility policy of the Company, from time to time and programmes thereunder, and issuing necessary directions as required for proper implementation and timely completion of corporate social responsibility programmes; and
- Performing such other duties and functions as the Board may require the corporate social responsibility committee to undertake to promote the corporate social responsibility activities of the Company.

**CSR Activities for the Year**

<b>2019-20</b>
<b>2018-19</b>
<b>2017-18</b>
<b>2016-17</b>
<b>2015-16</b>
<b>2014-15</b>

**Link file on click on each year pdf page to be opened**

**9. CONTACT US**

**Registered Office :**

**DNO. 11-40-1 S-1, CHITTURI COMPEX,  
PULIPARTIVARI STREET, VIJAYWADA -520001  
Email :**

**Phone : 0866 2466266,277,288**

**Corporate Office :**

**#48-12-17, Near ESI Bus Stop,  
Eluru Road, Gunadala, Vijayawada 520004**

**Fax : 0866-2466166**